



### 12' Poles *Ideal for most commercial jobs.*



SLP4

#### ZipWall® 12 4-Pack

Four 12' aluminum spring-loaded poles with zippers, and a carry bag. SLP2 2-Pack and SLP6 6-Pack also available.

### 20' Poles *Indispensable for high ceilings, great for smaller jobs too.*



KT20

#### ZipWall® 20 2-Pack

20' anodized aluminum spring-loaded poles.



MDK

### ZipWall® Magnetic Door

**Self-closing, hands-free jobsite access. Class A Flame Retardant**

Quick and easy to install  
Easily handles high traffic  
Reusable, works with all ZipWall® poles

### NEW! Steel Frame Magnetic Door Kit 3070

**Self-closing, hands-free jobsite access.**

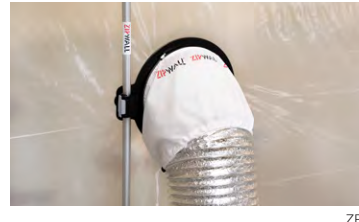
Quickly snaps onto steel frame

**Class A Flame Retardant**



M3070

For 3' x 7' Door

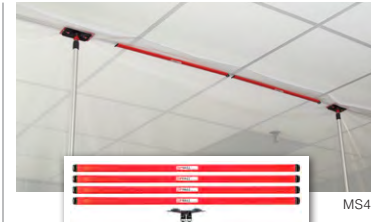


ZPT

### NEW! ZipWall® Dust Barrier PassThrough

**The easiest way to pass a duct hose through a ZipWall® barrier.**

Resealable opening  
Supports the weight of a duct hose up to 14" in diameter



MS4

### NEW! ZipWall® Magnetic Strips

**Keep your barrier tight against a drop-ceiling between poles.**

Four 26" magnetic strips and one applicator.



### ZipWall® Heavy-Duty Zipper 2-Pack

**Quickly create an entryway in a plastic barrier wherever you need it.**

### ZipWall® Heavy-Duty Zipper 12-Pack



HDAZ12

### Doors

**Cover any doorway in less than a minute.**

Each unit includes one roll of 1" x 24" ZipWall® double-sided tape and two flap hooks.

ZDS

#### ZipDoor® Standard Door Kit

Door panel: 4' x 7.5'

ZDC

#### ZipDoor® Commercial Door Kit

Door panel: 5' x 8.5'

**Class A Flame Retardant**



### ZipWall® Mat

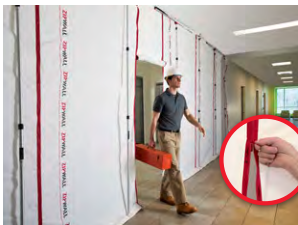
**Prevent tracking jobsite dust.**



ZWTM

One base with one 30-sheet pad.  
Refill pads available

Base: 25" x 37"  
Mat: 24" x 36"



### ZipFast Reusable Barrier Panels

**An eco-friendly alternative to plastic.**

Panels zip together to build a dust barrier as wide as needed.

Heavy-duty zippers are preinstalled.

ZFMP



#### Multi-Pack

Machine-washable

Strips hold door open for easy access.



**Seal a barrier along the ceiling, walls, and floor - without tape.**

### FoamRail Span™

**Adjustable Tapeless Seal**

SPN

Extends from 4'3" to 8'.

SDPK

#### SidePack™ Wall Mount Kit



ZWTK

### ZipWall® Dust Barrier Toolkit

**Ready to meet any dust barrier installation challenge.**

Everything you need to create many different dust barrier configurations including a barrier up to 16' wide sealed on all four sides.

# Start every job with ZipWall®.

## Ideal for:

- Hardwood/Engineered Installations
- Laminate Installations
- Concrete Cutting Barriers
- Construction Project Manager
- Healthcare facilities conducting general maintenance, remodeling, construction, painting, drywall, cleaning, ceiling tiles, mold/asbestos remediation etc.
- Jobsites looking to provide active means to prevent airborne dust from dispersing into atmosphere

## Applications:

- The ZipWall® dust barrier system is used virtually everywhere. Professional flooring contractors across industries and trades depend on ZipWall® barriers for dust protection. The ZipWall® dust barrier is used in remodeling, renovation, and restoration jobs, sanding, drywall and flooring jobs, demolition, concrete cutting, and the list goes on.
- ZipWall® barriers can be found in healthcare facilities, hospitality and retail spaces, manufacturing, government and education buildings, transportation, and property management buildings, and of course, in the residential market where the ZipWall® system originated.



## KEY ISSUES

Airborne dust during renovation/maintenance/repair

- Keep patients and equipment safe from airborne dust.
- Ensure compliance with ICRA, state rules and r OSHA silica rule, and facility-specific dust plan requirements.
- Keep the facility running smoothly.
- Maintain patient privacy.
- Keep workers safe.

## ZIPWALL® ADVANTAGES

- Quick to set up – saves time & money – ready 24/7
- Complete system – wide range of dust protection solutions
- Perfect for healthcare applications: barrier up to 20' high – tightly sealed without tape – provides privacy
- Reusable – cost-effective
- No ladders needed – worker safety!
- No damage to surfaces – eliminates repair time & expense.

## KEY SOLUTIONS

A ZipWall® Dust Barrier is set up in minutes – isolates the work area and contains dust during construction, renovation or repair. ZipWall® is the go-to solution for

- Quick jobs, emergency jobs, off-hours jobs
- Antechamber at the entrance to a jobsite
- Temporary dust protection for the construction of a semi-permanent dust containment wall required for large jobs.

## LEARN MORE

- Product Info – [newtechcanada.ca/products](http://newtechcanada.ca/products)
- Videos – [newtechcanada.ca/videos](http://newtechcanada.ca/videos)
- Plan for What You Need: [zipwall.com/job-planner](http://zipwall.com/job-planner)

**ZIPWALL®**